

KYK Co.,Ltd promises to treat every customer fairly and respectfully with their health and happiness our number one priority.

KYK Co.,Ltd

.....
The head office address / Manufacturing Company

#407~410 Sun-il technopia, 555 Dunchon road, Joongwon-Gu,
Sungnam City, Kyunggi-Do, KOREA

TEL. 82-31-777-3939 FAX. 82-31-777-3456 Made in Korea

 KYK HI, HYDROGEN “KYK~HIGEN”

KYK Hydrogen Water Generator

USER MANUAL

Higen1⁺ Premium



Thank you for Being our Customer!

Dear KYK HIGEN Customer

Hope all is more than perfect for you, valuable customers.

I appreciate the purchase our product you made.

Please, Read this manual with all your eyes before use.

This is not only for learning how to use our product properly, but also getting helpful information regarding our products' features and strong points.

Furthermore, with the information in this booklet, you can choose the customized water to suit each multipurpose application, and can maximize the performance and the lifespan of the product.

All of KYK executives and staff members have pledged to put ourselves in our customers' shoes, and to do all our best for our customers' benefits, health, and happiness all the time.

Please, feel free to contact us anytime, if you have any inconvenience while using or opinion regarding improvement points.

Again, I thank you from the bottom of my heart for your choice and commitment you have made.

I wish you are healthier and happier with your precious family you richly deserve.
Thank you.

Sincerely



KYK 김영귀 환원수

President

김영귀

| Table of Contents |

● Major Components	4
● Parts and Features	5
● Before installation	6
● Installation	7
● Installation checklist	13
● How to use	14
● When to change the filters	16
● How to change the filters	17
● Summary of Operation Notices	20
● Notices for Safety	21
● Product Specifications	22
● Warranty Registration	23

※ **Note:** This product is a medical substance producer and you should read this manual carefully before operating the product.

Major Components



Body

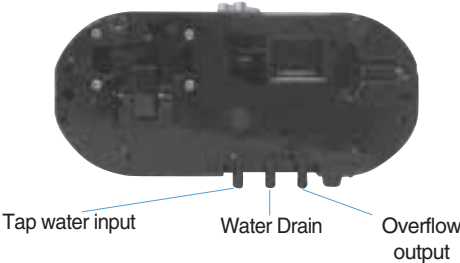
[Front]



[Back]



Bottom



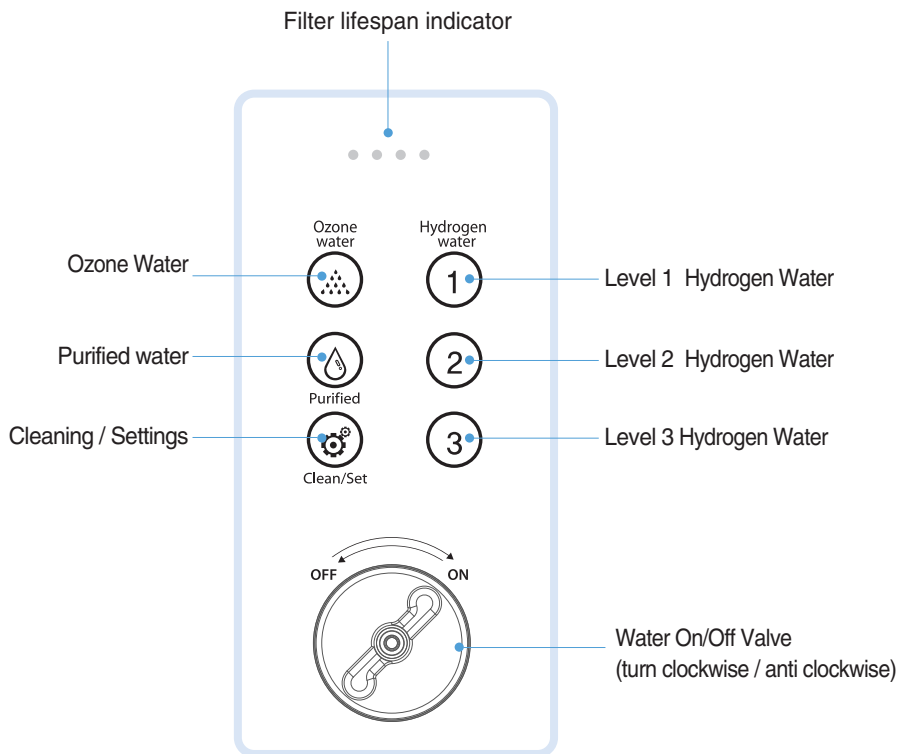
Accessories

				
User manual	Tubing	Water Pressure Reducer Valve	Diverter valve	6x8 90° elbow connectors

Parts and Features



Control Panel



Clean/Set

Cleaning/Settings:

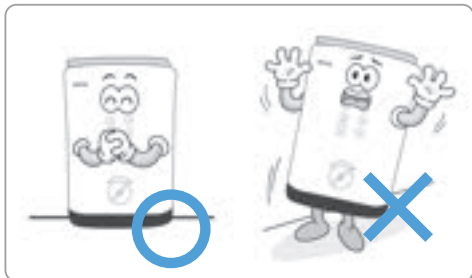
Tap to start cleaning cycle or access settings.

Cleaning starts automatically every 30 liters of continuous use to protect electrolysis chamber.

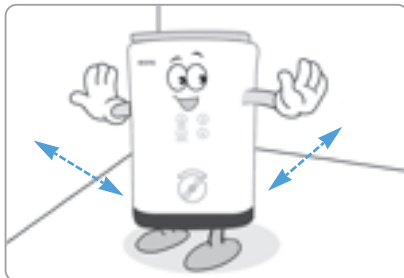
Before installation



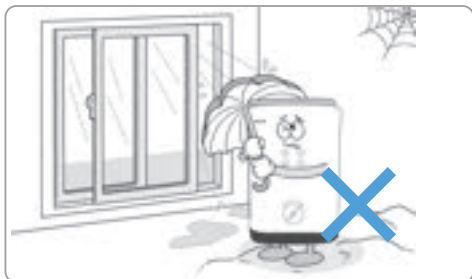
Read the recommendations below before installing the ionizer



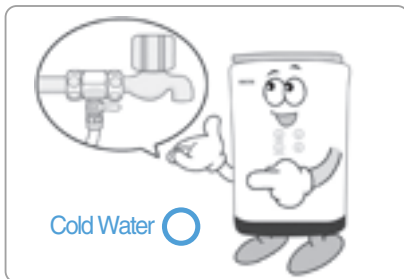
Do not tilt the product



Install the product at least 10cm away from walls.



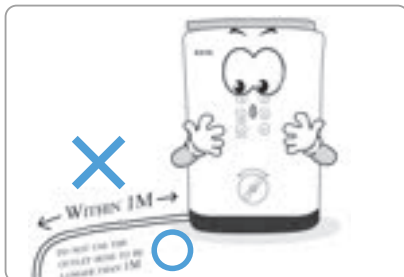
Keep the product in dry places, avoid high moisture areas or direct sunlight.



Connect the ionizer only to cold water supply. Damage resulting from connecting the ionizer to hot water supply is not covered by the warranty.

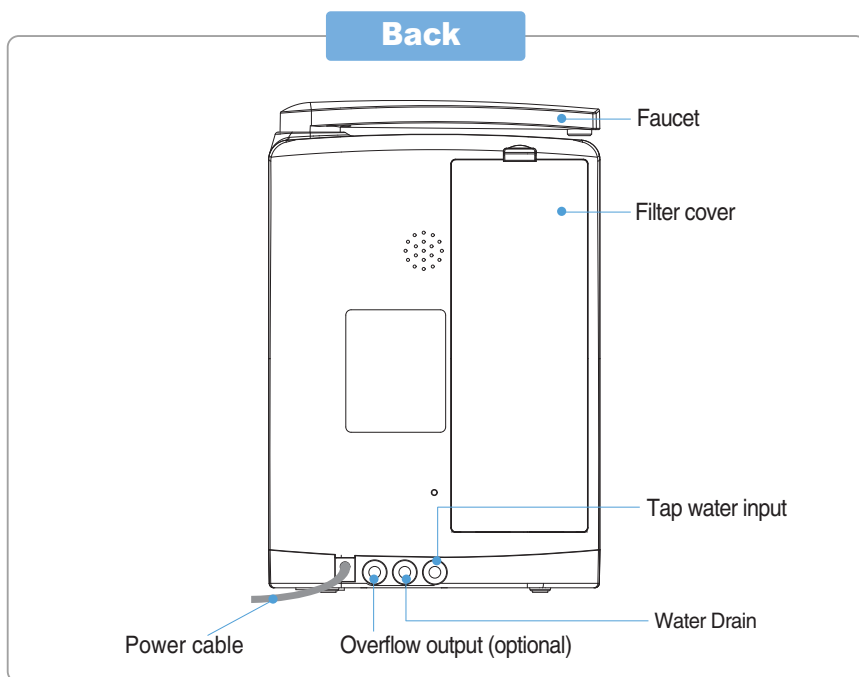


Water drain tubing must not be raised higher than the base of the product.

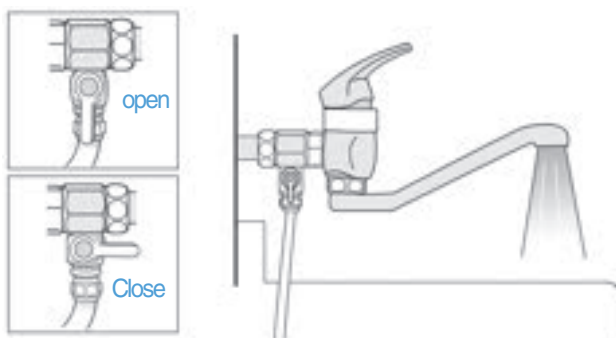


Within 1M, do not use the outlet hose to be longer than 1M

Installation



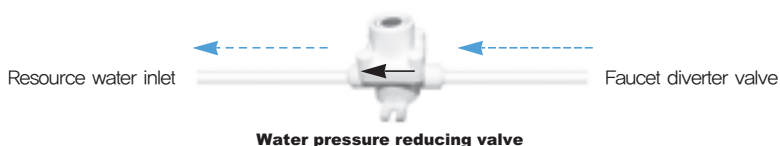
- 1 Lock the tap water; connect the device to cold water supply. The hose included with the device is 6 \varnothing :1/4 inch.



Installation

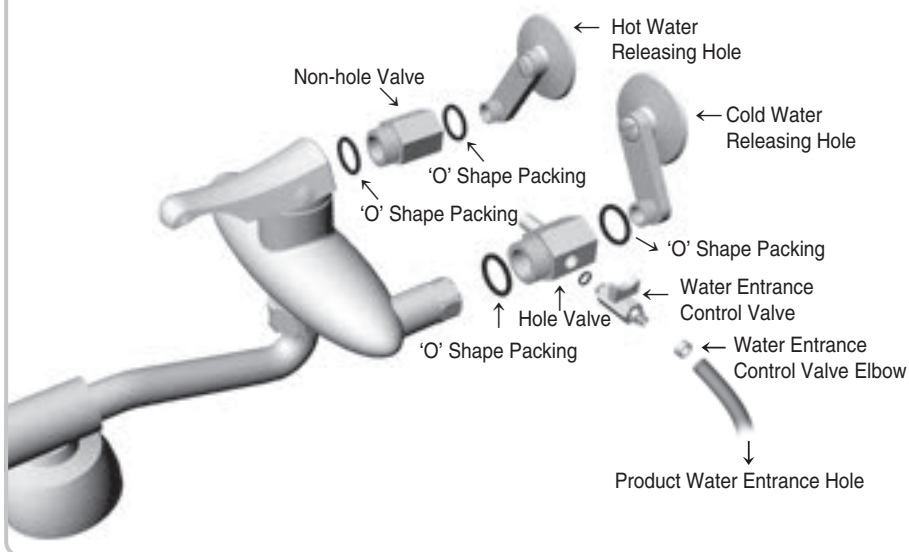


Please, place the water pressure reducing valve between the faucet diverter valve and the product.



※ Please, be aware the way of the water pressure reducing valve when you place it. Arrow mark indicates the flow of water.

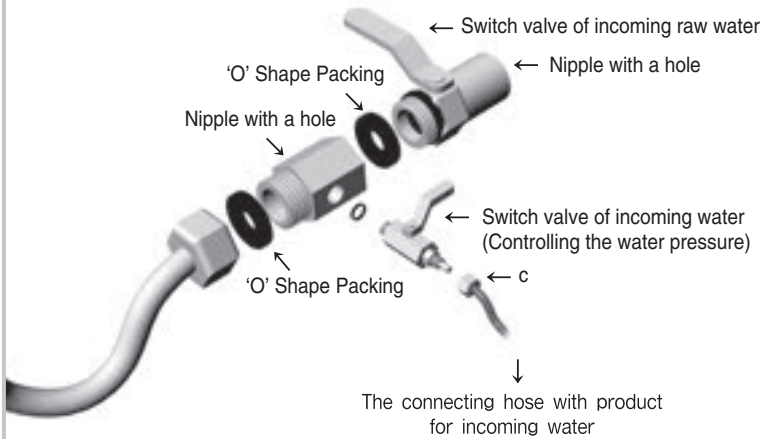
Installation of separation cool and hot water type



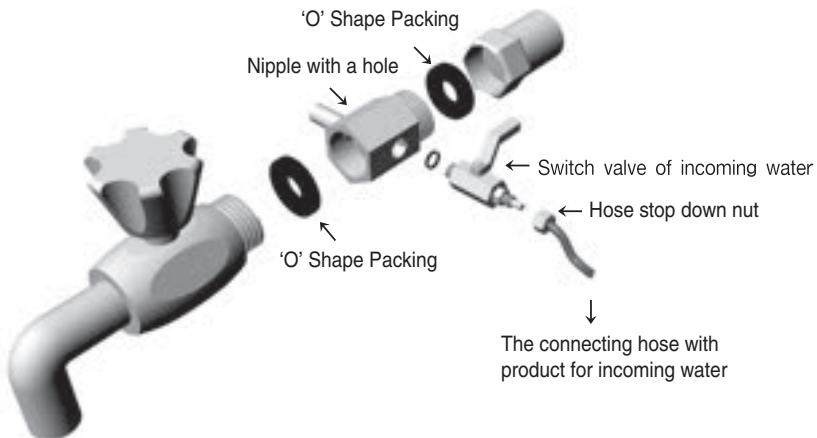
Installation



Under sink installation



General model type installation



Installation



Information-Connecting with a tap type



- Fixing with a screw type- Insert at the end of a tap by adjusting a balance and stop out a screw.
- Formal ring-Remove the ring from the end of a tap and turn and insert a formal ring.

← A hose band

← Connecting with the product



Please, place the water pressure reducing valve between the faucet diverter valve and the product.



CAUTION

- All hookup part of pipe arrangement has to be covered by teflon tape for avoiding the leakage and you control the bounding number of tape for keeping the level of a horizontality and a perpendicularity.
- When you decompose and reassemble the product, if you give the over force, it will be possible to leak after assembling the product because of a pipe arrangement distortion of raw water, a break out of rubber packing and a breakage.
- If you stop down the nut too strong, the water will be possible to leak because the hose in the hose stop down nut can be torn. Or if you stop down the nut too loose, the water will leak because the hose is missed from the switch valve.
So you connect the hose safely by giving the proper strength carefully.
- If you misconnect hoses between inlet and water drain port, it may not generate hydrogen and cause the main failure. Any failure from this misconnection should be covered by the person who did the installation.

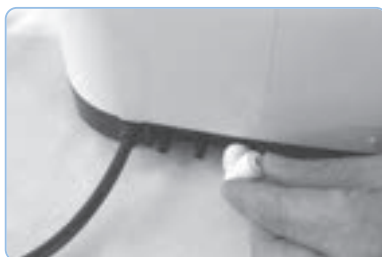
Installation



- 2 Turn off the water control valve before connecting the water supply tubing to the machine.



- 3 Firmly attach 90° elbow connectors to water input and output on the back of the machine.



- 4 Firmly connect water supply and drain tubing to the elbow connectors.



CAUTION Inlet, outlet check

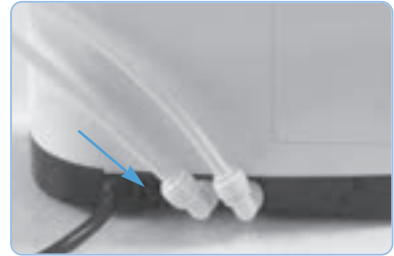
Because a confusion between the inlet of raw water and the outlet of water drain not only prevents hydrogen water from being created but also causes a severe failure of the product, make sure not to install the inlet of raw water and the outlet of water drain in the opposite way.

Installation



5

Firmly connect the hose for water drain output



CAUTION

- Cut the water drain hose within 1m. Longer water drain hose may cause difference in hydrogen concentration.
- Place the hose end for water drain port lower than the machine.
- Fit the hose onto the fitting by pushing twice and it will not pulled easily.

6

Open the tap water and plug the device into a wall outlet. You will hear a start-up sound and all lights will turn on for 3 seconds. Then water will be automatically set to level 2 Hydrogen water.

Turn the faucet and open the water control valve (ON) to start water flow.



CAUTION

- Check the hose connections for leaks before using the device.
- Diverter installation may cause pipe particles or rusts. Run the water out to your tap to protect the machine.

Installation checklist



How to check the water pressure and set up

If the water pressure is too low or high, the buzzer will be sounded, when you drain the water. The machine will sound the warning, if the water pressure is lower than 0.5liter, higher than 3.5liter. When you install the machine for the first time, turn on the machine with closed water pressure controlling valve, and then slowly open the valve to adjust the water pressure. (The proper water pressure is 1.5~3.0kgf/cm and water pressure is 0.7~ 0.8ℓ / min)

- ① When you use a measuring instrument: Measure the pressure of raw water with a measuring instrument and if the water pressure is low then please adjust the water pressure by using the water pressure controlling valve.
- ② Without measuring instrument (A simple measuring way):
If you can fill the paper cup(200ml) in 13~14 sec, the water flow rate 0.7~0.8ℓ / min for normal operation.

The case that ground water or solid quality of water is used

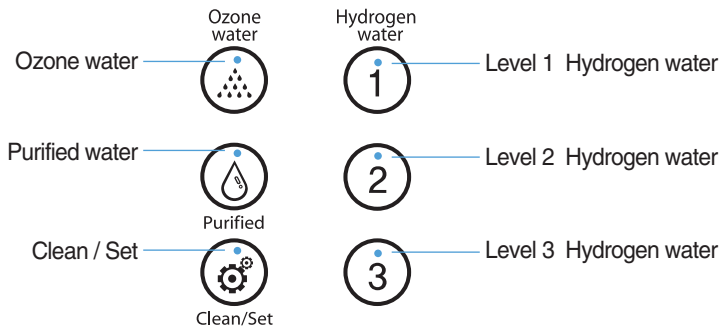
- If the quality of groundwater is bad, use outer filters.
- For areas with high limestone in the water, use special filter to remove limestone.

For hard water, choose appropriate outer filters. Clean the machine by pressing CLEAN button regularly. Diverter installation may cause pipe particles or rusts. Run the water out to your tap to protect the machine.

How to use



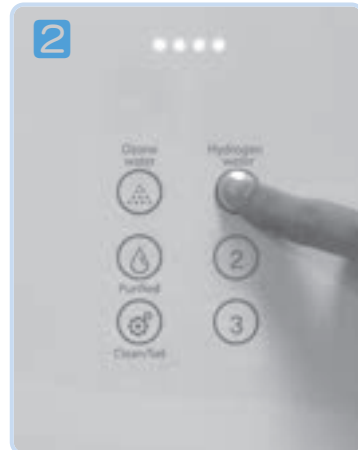
Once you touch the button, the LED light will be turned on.



How to operate

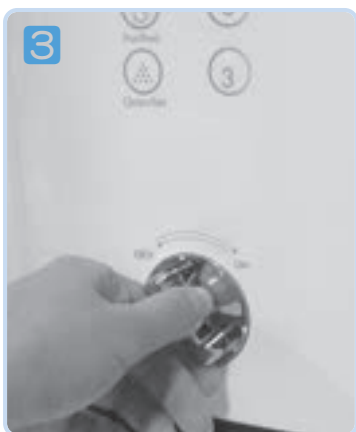


Pull forward the faucet on the top.

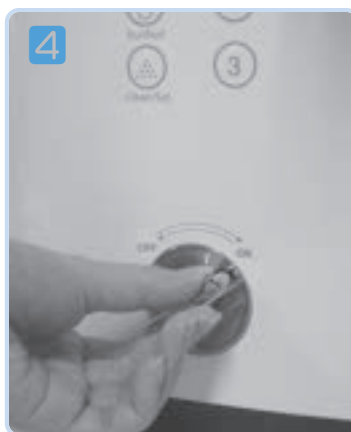


Once touch the button of desired level of water and the LED light will be turned on with buzzer sound.

How to use



Once you turn the On/Off valve to the On side, the water will be drained with flickering of LED light.



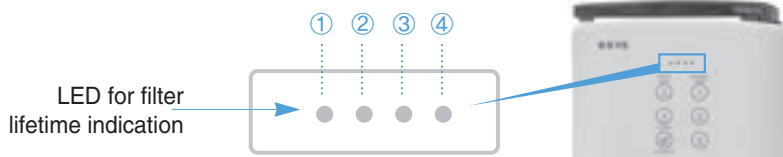
The optimized amount of flow is 0.7ℓ ~ 0.8ℓ per minute.
(including acidic water)

Stop the valve handle in the appropriate location if the water pressure is high.

Turn the On/Off valve to Off side to stop the water.

- Once you start water dispensing, filter lifespan indicator shows you how much filter life left for 3 sec and the light will move to show you it is working.
- Default setting is Level 2 Hydrogen Water
- To protect electrolysis cell, after 30 liter generating, it will give you audio alert and go for automatic cleaning for 60 sec.
- Even after turning Off the valve, the water could come out for another 3~5 seconds. Please don't worry as it is just safe and normal.
It could just happen by the remaining air pressure with high capacity of hydrogen inside filter.

When to change the filters



■ Water treatment capacity, service life of filter:

May vary depending on the region or water quality.

■ Filter replacement time:

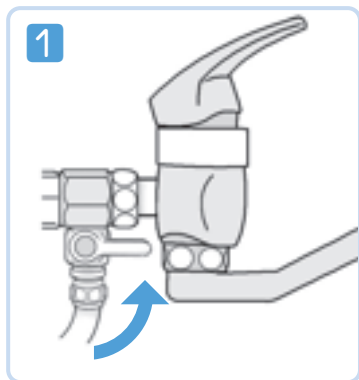
As the amount of filter use and the use period are applied at the same time, you have to replace the filter if the period comes first even though the filter purification capacity is still left.

On the contrary, if the period is still left, replace the filter if the filter purification capacity is exhausted.

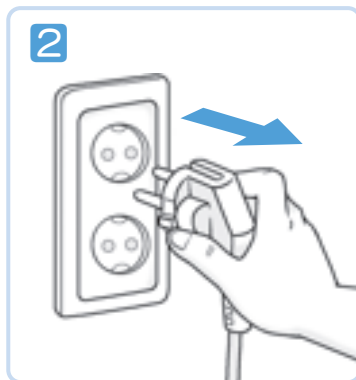
CAUTION

- If the water quality of raw water is low, install a pre-filter.
- In the event that the water flowed out smells, replace the filter although it is before the filter replacement time.
- Replace the filter if the period comes although the filter purification capacity is still left. (LED flickering)

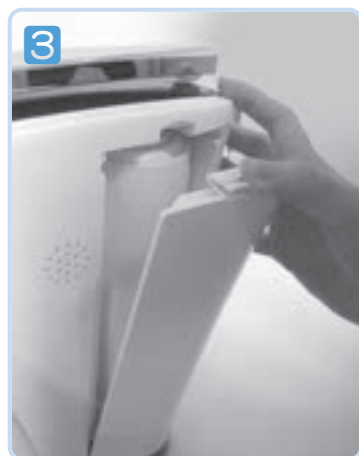
How to change the filters



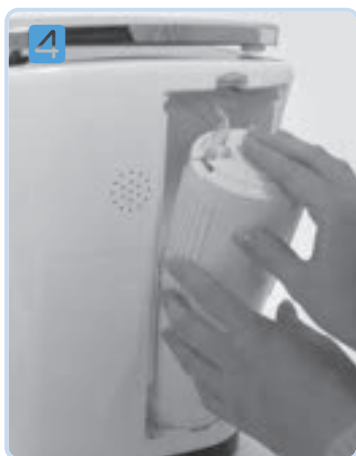
Close the diverter.



Unplug the machine.

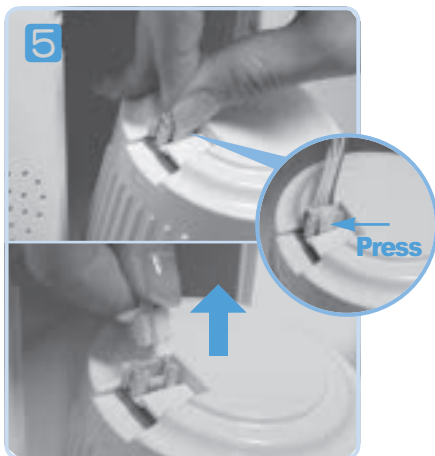


Remove the filter cover pushing the hook on it.

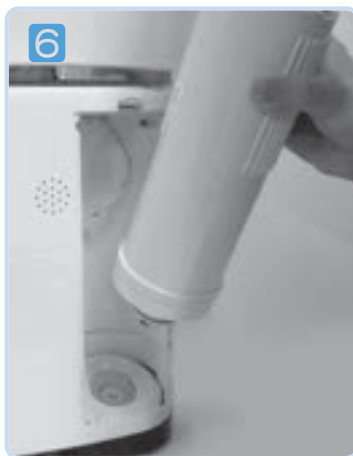


Take out the old filter to be replaced by pulling it forward.

How to change the filters



Unhook the electric wire connected to the filter sensor located on the top of the filter.



Grab the filter and rotate it counter-clockwise. Pull it out.

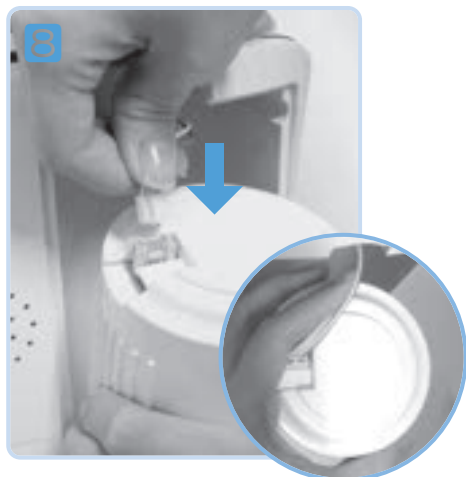


Please remove the safety seal of the new filter. Place it on the filter holder and press. Close it by turning it clock-wise.



Make sure that the rubber ring in the connection between the filter and the main body is not detached or jammed. Failure to do so may cause a leak of water.

How to change the filters



Connect the electric wire to the filter monitoring sensor. Please refer to above picture to be careful with electric wire when you push the filter into a position.



Close the filter cover. Reconnect the power cord and open the action valve to drain water for 2~3 minutes until the black water is completely drained out before drinking.

Summary of Operation Notices



- Do not use this product for any purpose other than what's described in this manual.
- Do not modify this product intentionally.
- Do not place heavy objects on this product.
- Do not lift this product body holding the stainless steel tube, it will break.
- Always keep the disposal outlet open so water can drain.
- Use AC110V/120V(American type) and AC 220V~240V (European type) with this product.
- Do not use overly contaminated water with this product. Tap water is best.
- If there is a problem with this product, please call your service center.
- Do not use hot water with this product.
- When the filter change signal is displayed, please change the filter as soon as possible.
- When you do not use this product for more than two days, run water through it for 1~2 minutes before using.
- When you use this product for the first time, run water through it for 2~3 minutes.
- When you do not use this product for a long time (over 1 week), please unplug it, remove the filters, and dry it out.
- Be careful when changing the filters to not damage the O ring.
Change the filters carefully.
- Do not use well water, groundwater, contaminated water and water contained with high amounts of heavy metals.
- Do not use water hotter than 35° C to protect the machine.
Room temperature water is the best.
- Do not supply unit with Hydrogen water.
- Do not use alcohol for cleaning and washing the product.
(Only use a gentle soap)
- Change the filter regularly.
- Do not take this product apart.
- Do not shock or shake the unit.



To avoid electric shock, leak and /or fire.

- This product must only use AC110V/120V(American type) and AC 220V~240V (European type) .
- Keep the electrical plug free of dust and dirt.
- If the electrical plug is broken, do not use the KYK Product.
- Do not connect too many electrical plugs to one power supply.
- Dry your hands before inserting or removing the electrical plug.
- Do not bend or pull the electrical plug with too much strength.
- Do not take apart or repair the KYK Product without certification.



To avoid problems and failures of the KYK product.

- Do not expose the KYK Product to highly moisturized environments such as rain, your bathroom, or your shower.
- Do not place heavy objects on the KYK Product.
- Install the KYK Product on a solid and horizontal countertop or shelf.
- Only use cold water with the KYK Product.
- Do not move the KYK Product while it is operating.
- Do not shock the KYK Product.



To avoid leakage

- Do not twist or bend the water supply hose.



To avoid staining and peeling.

- Do not use thinner, benzene, or wax when you clean the KYK Product.



To avoid distortion of the KYK Product exterior.

- Keep out of direct sunlight or heat.



To avoid impure water and malfunctioning of the KYK product.

- Be sure to only supply clean, quality water to the KYK Product. Do not hook up directly to a well, lake, river, etc.



Product Specifications



Product Name	KYK Hydrogen Water Generator	Model	Higen1 +
Manufacturer	KYK Co.,Ltd (#407-410 Sun-il technopia, 555 Dunchon road, Joongwon-Gu, Sungnam City, Kyunggi-Do, KOREA)		
Manufacturing No. and Date	As shown as on the backside of the product.		
Standard Voltage and Frequency	AC110~120V, 60Hz(American type) and AC 220V~240V, 60Hz (European type)		
Size and Weight	Size : 220(W) X 322(H) X 100(D) mm / Weight :2.4kg		
Composition and Water Supply Type	Stationary or Wall-mounted / Direct connection to tap water		
Available Temperature	5° C~35° C	Power Consumption	70W
Available Water Pressure	3.0 kgf/cm ²	Controlling Method	Touch sensor
Electrolysis Method	Continuous electrolysis		
LED Indication	3 levels of hydrogen Water / Ozone water / Purified water / Clean / Mode button / Filter usages		
Filter Capacity	Approximately filter-6months (may need to use the filters for shorten periods regarding raw water environment of region or nation)		
Filter Replacement Time	① When the light of Filter Life LED begin to blink once ② If the taste and smell of water is not normal, you should change the filter anyway. ③ Indicate the replacement time based on the filter purification capacity or the use period of the filter whichever comes first. ④ Use the genuine filter of the company. We are not responsible for the damage caused by using an imitation and no after-sales service is available.		
Filter Type	Composite Filters		
Filter Change Instructions	Filter Change (see the user manual)		
Filter Shell Material	Non-toxic ABS		
Power Source Protector	Fuse		
Over-current Detector	Automatically stop the electrolysis		
Overheat Protection Device	Temperature detector circuit installed inside SMPS power supply automatically stops the device.		

Warranty Registration



Terms of Warranty	One year parts and labor.		Purchase Date	
Customer's	Address			
	Name			
	Phone No			
Seller	Representative			
	Name			
	Phone No			

1. Our company will pay for repair, labor and shipping for one year guarantee performance and operations. If repair of the produce is not possible, we will replace the product.
2. Customer will pay for repair charges including shipping under the following conditions:
 - (1) A malfunction occurs after the warranty has expired.
 - (2) The unit is damaged by the customer.
 - (3) Damage is caused by customer attempting to repair the unit themselves or the unit is repaired by an unauthorized service center.
 - (4) Damage is caused by using the incorrect electrical voltage.
 - (5) Damage is caused by using an imitation filter.
 - (6) Damage is caused by a natural disaster.
 - (7) Damage is caused by exposing the electronics to water or moisture.



KYK HI, HYDROGEN “KYK~HIGEN”